

Hurry! Register by December 20!

REGISTER WITH BRIE by:

- Email: brie.wells@pkffa.co.nz
- Call/Text: **027 367 2867**
(Best time to call is evenings and weekends.)

With the FOLLOWING INFORMATION:

- Name(s)
- Ages (if under 18)
- Contact Details
- Accommodation Preferences
- Any Food Allergies?
- Choice of Payment

PAYMENT OPTIONS:

- Internet Payment
- Cash on Arrival at Camp

For Payment details and any other questions, contact Brie.

Anyone under 13 must be accompanied by a caregiver.

WHAT TO BRING:

Your own Gear, Bible, Towels, Bedding and Pillow (unless you signed up for Lodge Accommodation), Baking to share (optional)

<u>CAMP FEES:</u>	
CHILDREN 0-5	FREE
CHILDREN 5-12	\$85
STUDENTS	\$120
ADULTS	\$140
MARRIED COUPLE	\$245
FAMILY CONCESSION (2 adults, 2 children under 18)	\$350
Each additional child under 18	\$40
Day Visitor per person	\$5 per meal

Accommodation Choices

Standard Accommodation:	
Family Room	
Twin/Double	
Dorm	
Lodge Accommodation (**see note below)	
Family Room (sleeps 4)	
Twin/Double	

****Note:** There is a \$10 surcharge per person per night for Lodge Rooms -bathrooms shared

COOPER'S BEACH



SUMMER CAMP

DEC 30-JAN 4.

Coopers Beach Christian Camp
154 State Highway 10
Coopers Beach Northland

www.cbcyc.co.nz

www.facebook.com/

Coopers Beach Christian Youth Camp



START YOUR YEAR

with some

TIME OUT

for Spiritual and Physical Refreshment

“Come to Me, all you who labor and are heavy laden, and I will give you rest. Take My yoke upon you and learn from Me, for I am gentle and lowly in heart, and you will find rest for our souls.”

Matt. 11:28-29

CAMP SCHEDULE

STARTS THURSDAY, DEC. 30

- Check- In 3:00pm - 5:00pm
- Dinner at 5:30
- First Ministry Session 7:00pm

ENDS TUESDAY, JAN. 4

- After Breakfast & Clean-Up

EVERY DAY (EXCEPT SUNDAY)

- 8:00am Breakfast
- 9:15-11:45 Ministry Sessions
- 9:15-11:45 Kids Sessions (ages 5-12)
- 12:15pm Lunch
- 1:00pm Free Afternoon
- 2:00pm Camp Activity -Optional (i.e., waterslide, kayak, etc.)
- 5:30pm Dinner
- 7:00pm Family Bible Teaching (Last Night--Camp Concert)

SUNDAY

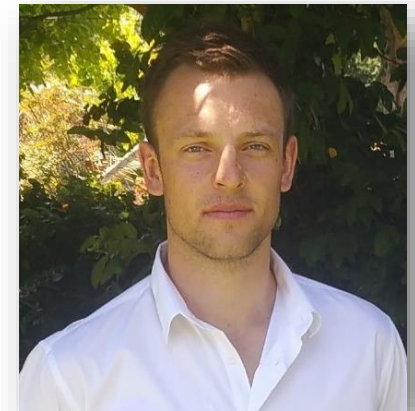
- 9:30am - Ministry
- 11:00am - Worship
- 7:00 pm - Gospel Service

SPEAKERS



BIVIN MATTHEWS

Bivin and his daughter Chloe recently moved from Dunedin to Auckland, where they fellowship at Manurewa Bible Chapel. Bivin is passionate about God's Word and preaching the unified story of the Bible.



RHYS LAMONT

Rhys has been a full-time itinerant Bible teacher for the last year mostly in Southland and Otago. He loves studying the Bible and teaching the Word of God to others.